



Product Specifications



1900 Scott Avenue • Des Moines, Iowa, USA 50317 • tel: 515.559.5100 • www.kemin.com/ag

KemTRACE[®] brand Chromium 0.04% Dry Mineral Supplement (0.04% Chromium from Chromium Propionate)

ITEM CODE

014535

DESCRIPTION

A chromium supplement for adult horses, broilers, growing turkeys and all classes of swine and cattle to be used in complete feed.

INGREDIENTS

Calcium Carbonate, Mineral Oil and Chromium Propionate.

QUALITY SPECIFICATIONS

Guaranteed Analysis	
Total Chromium	(Cr) min - 0.04%; 400 ppm
Calcium	(Ca) min - 36%; 360,000 ppm
Calcium	(Ca) max - 40%; 400,000 ppm
Parameter	
pH of a 10% solution	7.0 – 9.0
Residue	Less than 5% (20 mesh screen)
Color	Green
Odor	Slightly acrid

TYPICAL CHARACTERISTICS

Parameter	
Flowability	Good
Bulk Density	60 – 90 lb/ft ³

INSTRUCTIONS FOR USE

HORSES: KemTRACE Chromium 0.04% dry delivers 0.8 parts per million (800 parts per billion) chromium (from chromium propionate) when added and thoroughly mixed at the rate of 4 pounds per ton of horse feed.
FEEDING RATE: Adult horses should be fed at a rate not to exceed 4 mg of chromium per head per day.

BROILERS: KemTRACE Chromium 0.04% dry delivers 0.2 parts per million (200 parts per billion) chromium (from chromium propionate) when added and thoroughly mixed at the rate of 1 pound per ton of complete broiler feed.

GROWING TURKEYS: KemTRACE Chromium 0.04% dry delivers 0.2 parts per million (200 parts per billion) chromium (from chromium propionate) when added and thoroughly mixed at the rate of 1 pound per ton of complete turkey feed.



Product Specifications



1900 Scott Avenue • Des Moines, Iowa, USA 50317 • tel: 515.559.5100 • www.kemin.com/ag

SWINE: KemTRACE Chromium 0.04% dry delivers 0.2 parts per million (200 parts per billion) chromium (from chromium propionate) when added and thoroughly mixed at a rate of 1 pound per ton of complete swine feed.

CATTLE: KemTRACE Chromium 0.04% dry delivers 0.5 parts per million (500 parts per billion) chromium (from chromium propionate) when added and thoroughly mixed at a rate of 2.5 pounds per ton of complete cattle diets. Chromium propionate must be premixed with dry ingredients prior to adding to high moisture ingredients or forages.

HANDLING AND STORAGE

STORAGE: Store at room temperature. Rotate inventory. Do not cross-contaminate unsupplemented feeds.

WARNING: Do not breathe premix dust. Restrict use to responsible individuals. Dust from this product has been classified as a nuisance.

CAUTION

Follow label directions. Chromium from all sources of supplemental chromium cannot exceed 4 mg per horse per day, cannot exceed 0.2 parts per million of the complete broiler, turkey or swine feed and cannot exceed 0.5 parts per million of the complete cattle diet.

MOLECULAR STRUCTURE OF KEMIN CHROMIUM PROPIONATE

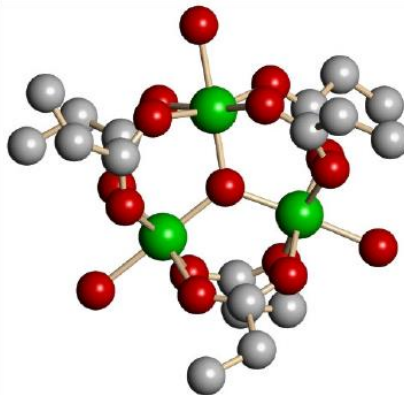
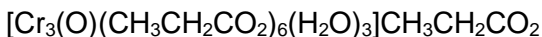


Figure 1. Drawing of Kemin chromium propionate cation. Green indicates chromium atoms; grey indicates carbon atoms; red indicates oxygen atoms. Hydrogen atoms are not shown for clarity.

CHEMICAL NAME & EMPIRICAL FORMULA OF KEMIN CHROMIUM PROPIONATE

triqua-(μ_3 -oxo)hexakis(μ_2 -propionato-*O,O'*) trichromium propionate



REFERENCE

21 CFR 573.304

AAFCO Ingredient Definition 57.166

PACKAGING

25 kg bag